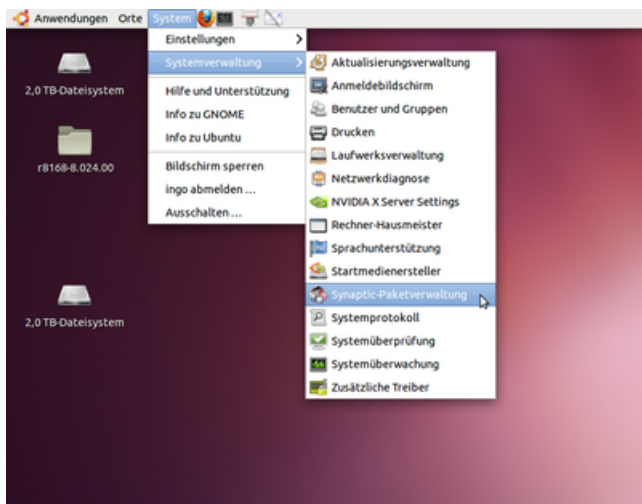


Basic Requirements - Ubuntu

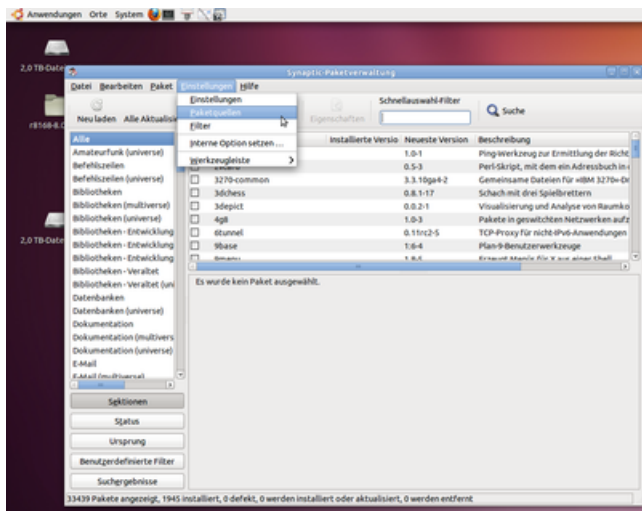
How to install a Little Goblin development environment on Ubuntu Linux

Installing Java & MySQL

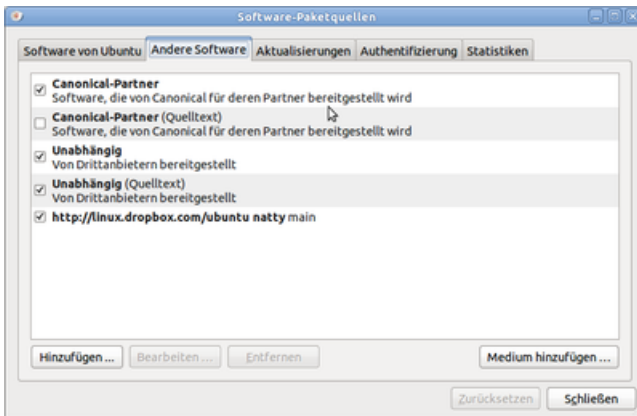
(Click on the images for a larger version)



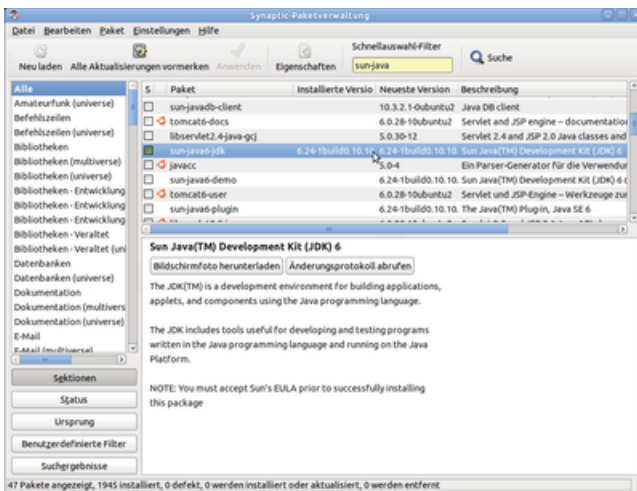
Open the synaptic package manager



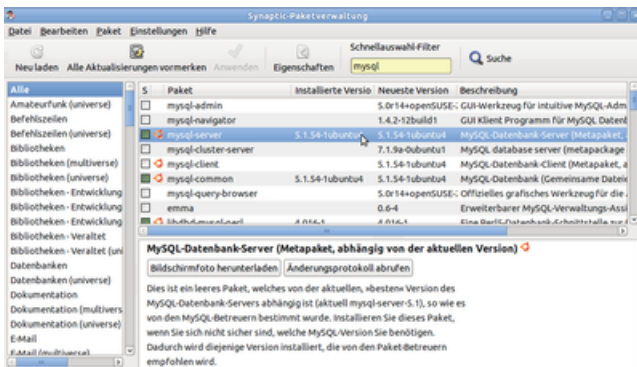
Open the package source dialog



Add third party packages. You will have to reload your package list afterwards.



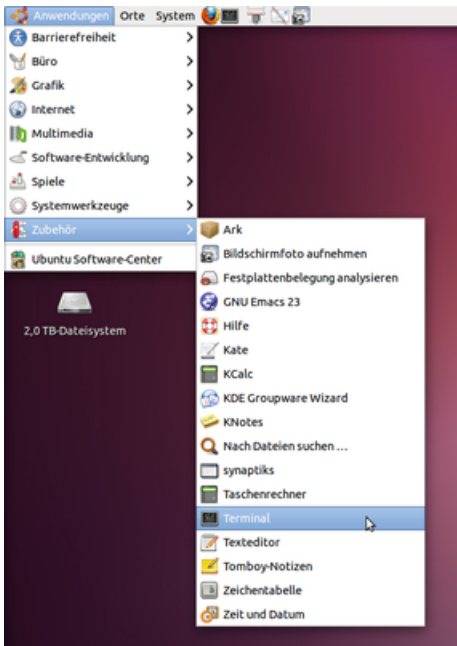
Install the sun-java6-jdk.



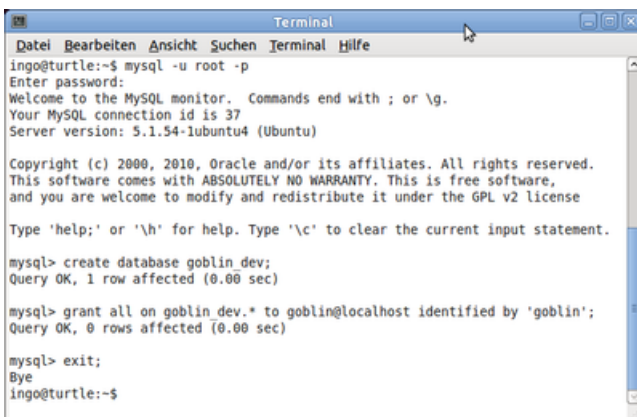
Install mysql-server (or postgresql, if you want & know what to do).

Note the password you select for the admin user.

Configure MySQL:



Open a terminal window.



The commands are:

```

mysql -u root -p
create database goblin_dev;
grant all on goblin_dev.* to goblin@localhost identified by 'goblin';
exit;
  
```

If you want to run it in productive mode, you should also create a "goblin" database and grant rights to it to the "goblin" user.

Download grails.zip from <http://grails.org> and unpack it.

Edit .profile

Edit your .profile: in the terminal window, type:

```
nano .profile
```

and add the following lines to your .profile file:

```

export JAVA_HOME=/usr/lib/jvm/java-6-sun
export GRAILS_HOME=/home/ingo/grails
export PATH=$PATH:$GRAILS_HOME/bin
  
```

(for more information, see <http://grails.org/Installation>)

Save the config file by pressing ctrl-o (to save) , return (to confirm), ctrl-x (to leave)

To have the changes take effect without logging off and on, type "source .profile" in the terminal.

Installing Subversion

On the command line (in the terminal), type:

```
sudo apt-get install subversion
```

Checkout Little Goblin

On the command line, type:

```
svn co https://littlegoblin.svn.sourceforge.net/svnroot/littlegoblin
```

Install the MySQL driver (or Postgres-driver)

Download the mysql-jdbc driver package from <http://dev.mysql.com/downloads/connector/j/>

Extract the mysql-connector-java-5.1.15-bin.jar and copy it into the project library folder: littlegoblin\goblin\lib\.

If you are installing with PostgreSQL, you should download the postgresql driver instead (<http://jdbc.postgresql.org/download.html>)

Installing IntelliJ-IDEA

Download IntelliJ-IDEA Ultimate Edition from <http://www.jetbrains.com/idea/download/index.html>.

Unpack it with

```
tar xzf idea-10.0.tar.gz
```

And (later) run it with:

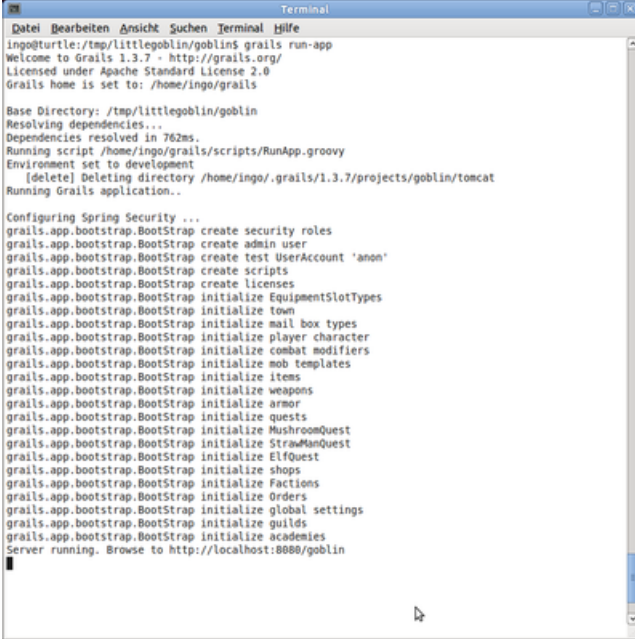
```
idea-IU-107.105/bin/idea.sh
```

(you will probably have to adjust the path name to the current version).

Running Little Goblin

On the command line, change into the Little Goblin directory and start grails, for example by typing

```
cd littlegoblin/goblin/  
grails run-app
```



```
Terminal
Datei Bearbeiten Ansicht Suchen Terminal Hilfe
ingo@turtle:/tmp/littlegoblin/goblin$ grails run-app
Welcome to Grails 1.3.7 - http://grails.org/
Licensed under Apache Standard License 2.0
Grails home is set to: /home/ingo/grails

Base Directory: /tmp/littlegoblin/goblin
Resolving dependencies ...
Dependencies resolved in 762ms.
Running script /home/ingo/grails/scripts/RunApp.groovy
Environment set to development
[delete] Deleting directory /home/ingo/.grails/1.3.7/projects/goblin/tomcat
Running Grails application..

Configuring Spring Security ...
grails.app.bootstrap.BootStrap create security roles
grails.app.bootstrap.BootStrap create admin user
grails.app.bootstrap.BootStrap create test UserAccount 'anon'
grails.app.bootstrap.BootStrap create scripts
grails.app.bootstrap.BootStrap create licenses
grails.app.bootstrap.BootStrap initialize EquipmentSlotTypes
grails.app.bootstrap.BootStrap initialize town
grails.app.bootstrap.BootStrap initialize mail box types
grails.app.bootstrap.BootStrap initialize player character
grails.app.bootstrap.BootStrap initialize combat modifiers
grails.app.bootstrap.BootStrap initialize mob templates
grails.app.bootstrap.BootStrap initialize items
grails.app.bootstrap.BootStrap initialize weapons
grails.app.bootstrap.BootStrap initialize armor
grails.app.bootstrap.BootStrap initialize quests
grails.app.bootstrap.BootStrap initialize MushroomQuest
grails.app.bootstrap.BootStrap initialize StrawManQuest
grails.app.bootstrap.BootStrap initialize ElfQuest
grails.app.bootstrap.BootStrap initialize shops
grails.app.bootstrap.BootStrap initialize Factions
grails.app.bootstrap.BootStrap initialize Orders
grails.app.bootstrap.BootStrap initialize global settings
grails.app.bootstrap.BootStrap initialize guilds
grails.app.bootstrap.BootStrap initialize academies
Server running. Browse to http://localhost:8080/goblin
```

This guide is modeled after Basic Requirements for a Windows installation. It will not hurt to read that page, too, in case I have forgotten something.